

RWI5030

Walk-In Tub

51.5" x 30.25" x 37.5"

GENERAL SPECIFICATIONS

Installation - Alcove

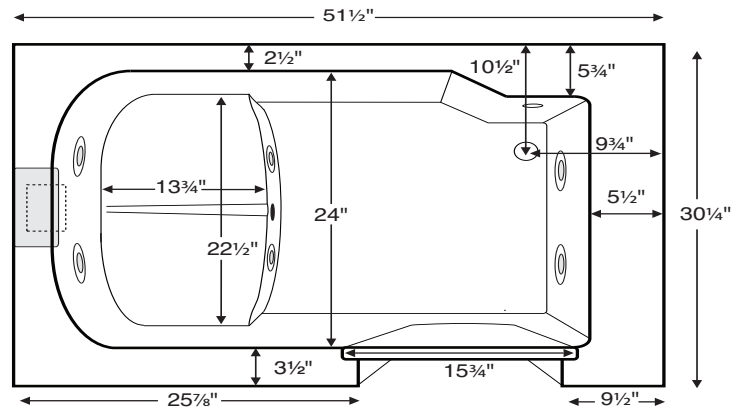
Not recommended as a tub / shower combination

Plumbed Weight - 190 lbs / 86 kg

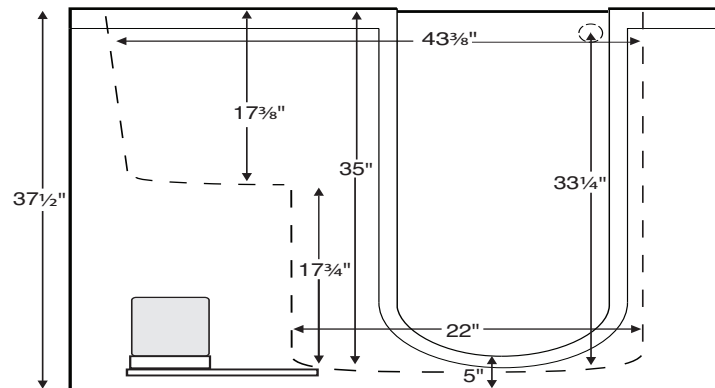
Soaker Weight - 165 lbs / 75 kg

Maximum Fill - 90 gal to overflow

NOTE: Filling this tub to the maximum may require an above average size or dedicated water heater.



Shown with Whirlpool Package and right-hand drain location.



IMPORTANT ORDERING & INSTALLATION INFORMATION:

- Before ordering or installing, please consider future access to all equipment.
- Removable panels on front skirt
- Quick-release drain kit in chrome finish included
- Comes without valve set. Combination packages with valves available. See next page for options.
- Grab bars come installed on tub
- Door gasket protected by limited lifetime warranty
- Suction and control locations may vary.
- Options listed cannot be combined with Designer Collection options.

RWI5030
51.5" x 30.25" x 37.5"

Hydrotherapy Package	Package Contents	Part #
Soaker Packages	soaking bath - no jets	RWI5030SNV
	soaking bath - no jets; with valve package	RWI5030S
	soaking bath - no jets; with Radiance® bath surface heating system	RWI5030SRNV
	soaking bath - no jets; with valve package and Radiance® bath surface heating system	RWI5030SR
Microbubbles Packages	1 microbubbles infusion port and pump	RWI5030MNV
	1 microbubbles infusion port and pump; with valve package	RWI5030M
	1 microbubbles infusion port and pump; with Radiance® bath surface heating system	RWI5030MRNV
	1 microbubbles infusion port and pump; with valve package and Radiance® bath surface heating system	RWI5030MR
Air Bath Packages	20 air jets, heated air blower	RWI5030ANV
	20 air jets, heated air blower; with valve package	RWI5030A
	20 air jets, heated air blower; with Radiance® bath surface heating system	RWI5030ARNV
	20 air jets, heated air blower; with valve package and Radiance® bath surface heating system	RWI5030AR
Whirlpool Packages	6 point-massage jets, 1-bhp pump	RWI5030WNV
	6 point-massage jets, 1-bhp pump; with valve package	RWI5030W
	6 point-massage jets, 1-bhp pump; with Radiance® bath surface heating system	RWI5030WRNV
	6 point-massage jets, 1-bhp pump; with valve package and Radiance® bath surface heating system	RWI5030WR
Microbubbles/Air Bath Combo Packages	1 microbubbles infusion port and pump; 20 air jets, heated air blower	RWI5030MANV
	1 microbubbles infusion port and pump; 20 air jets, heated air blower; with valve package	RWI5030MA
	1 microbubbles infusion port and pump; 20 air jets, heated air blower; with Radiance® bath surface heating system	RWI5030MARNV
	1 microbubbles infusion port and pump; 20 air jets, heated air blower; with valve package and Radiance® bath surface heating system	RWI5030MAR
Whirlpool/Air Bath Combo Packages	6 point-massage jets, 1-bhp pump, 20 air jets, heated air blower	RWI5030CNV
	6 point-massage jets, 1-bhp pump; 20 air jets, heated air blower; with valve package	RWI5030C
	6 point-massage jets, 1-bhp pump; 20 air jets, heated air blower; with Radiance® bath surface heating system	RWI5030CRNV
	6 point-massage jets, 1-bhp pump; 20 air jets, heated air blower; with valve package and Radiance® bath surface heating system	RWI5030CR

* **Valve Package** includes factory installed goose-neck spout in polished chrome with matching Roman tub hot and cold levers and deck-mounted hand-held shower and diverter.

Required Electrical Service - 110 Volt

- **Inline Heater**
For Whirlpool or Combo: Part # RHTI
Heater with Recirculating Pump for Soaker & Air Bath: Part # RHTISOAK
 - *Heater cannot not be combined with Microbubbles*
 - **End Panel (qty 1)**
Part # RSKAW25
 - **10" Tub Extension Panel**
Accommodates 60" openings.
Part # RSKGIW
 - **Tile Flange**
Must specify tile flange location on order.
Factory Installed
1 sides: Part # RTFK
2 sides: Part # RTFK2
3 sides: Part # RTFK3
- | | | |
|---|--|--|
| Soaker- Inline Heater
Microbubbles

Whirlpool - Inline Heater
Air Bath - Inline Heater

Whirlpool - Inline Heater & Radiance
Air Bath - Inline Heater & Radiance
Air/MB Combo

Air/WP Combo - Inline Heater
Air/MB Combo - Radiance | 1-15 amp
1-15 amp

1-20 amp
1-20 amp

2-15 amp
2-15 amp
2-15 amp

2-20 amp
2-20 amp | Air Bath or Whirlpool Microbubbles Radiance

Air Bath or Whirlpool - Radiance

Soaker - Inline Heater & Radiance Air/WP Combo

Air/WP Combo - Inline Heater & Radiance |
|---|--|--|

ALL WALK-IN TUB STANDARD FEATURES

- Constructed of fiberglass / titanium / resin with a marine-grade high-gloss gelcoat finish.
- Steel structural frame with 6 leveling legs.
- Front removable panels for equipment and valve plumbing access if necessary.
- Left- or right-hand drain location (must specify when ordering).
- Light-weight marine-grade door with easy-to-latch stainless steel hardware.
- 2 acrylic grab bars for security.
- Quick-release cable drain included in chrome finish.
- Textured bottom-compliant with ASTM C 1028-07 coefficient of friction test.
- 2 year residential warranty.

WALK-IN TUB WITH OPTIONAL FACTORY-INSTALLED VALVE PACKAGE

- Factory-installed goose-neck spout in polished chrome finish with matching Roman tub hot and cold levers and deck-mounted hand-held shower with diverter.

WALK-IN TUB MICROBUBBLES FEATURES

- A single, subtle infusion port that is color-matched to the tub.
- Whisper-quiet microbubbles pump.

WALK-IN TUB WHIRLPOOL FEATURES

- Six point-massage jets.
- 1-bhp whisper-quiet pump with silent air volume control.

WALK-IN TUB AIR BATH FEATURES

- Twenty low-profile air jet distribution ports are installed around the perimeter of the bathing area with color-matched caps. Each jet has an independent check valve preventing water and residue from entering the air lines.
- 3/4 bhp heated blower with automatic purge that dries the air jets 20 minutes after tub use.

WALK-IN TUB WITH OPTIONAL RADIANCE® SURFACE HEATING SYSTEM:

- Radiance® is a surface heating system designed to warm the interior surface of the tub (addition of Radiance® on a unit with whirlpool jets will require relocation of the jets on the backrest).
- Radiance utilizes electric heating grids for 2 zones: backrest area and seat of the tub. Grids are integrated in the tub structure.
- Low-voltage design. Uses energy equivalent to a standard light bulb.